

## Fast Track VMware-to-Azure Migrations

With Velostrata, organizations save countless hours by moving workloads to Azure in just five minutes or less



### Velostrata Accelerates Azure Adoption

#### With Velostrata customers can:

- Perform pre-migration workload testing in the cloud
- Migrate workloads from on-premises to Azure with just a few clicks
- Extend data center capacity on demand in real-time
- Move workloads back on-prem from public cloud—safety net, no lock-in

#### Why Velostrata is Different

Velostrata software has a number of key differentiators that make it an ideal solution to support enterprise cloud migration

**Speed:** Real-time streaming means stateful workloads begin running in the cloud within minutes (10-100x faster boot than replication-based approaches) while storage migrates in background, keeping your migration projects fast and on track.

**Simplicity:** Agentless technology that automatically adapts workloads for cloud, managed via vCenter plug-in, PowerShell, or integration with cloud management tools via full REST API.

**Scale:** WAN optimizations including caching, de-duplication, predictive pre-fetch, and compression means moving dozens of VMs per hour.

**Safety:** Test before you migrate to optimize performance and pick the right architecture, and enjoy the safety net of instant rollback to on-prem if needed.

#### Velostrata's Accelerated Cloud Migration

Everything you need to migrate from VMware to Azure is at your fingertips with Velostrata. Just a few simple steps take you through your entire cloud migration journey:

#### Velostrata 4-Step Migration

- 1. Model:** Inventory VMs and dependencies, define mass migration plan using runbook automation
- 2. Test:** Directly in the cloud before you migrate (isolated thin clones or live run-in-cloud)
- 3. Migrate:** Workloads begin in cloud within minutes, data pushed in background, syncs with on-prem, cutover in minutes
- 4. Detach (optional):** Stop data sync w/ on-prem, shift to native cloud storage

In addition to these four simple steps, Velostrata's patent pending technologies get on-premises workloads running in the cloud **100x faster than replication-based methods**. Because Velostrata transfers only what is needed to boot the workload, and then streams the remaining data in the background, it means workloads begin in Azure within a matter of minutes.



Figure: Cloud Migration time and complexity: Velostrata versus replication-based methods

“I was excited to see that we were able to very quickly move servers from on-premises to the public cloud, without any manipulation or conversion of the VMs and with excellent performance.

With Velostrata, I have the flexibility to leverage the public cloud on-demand and I'm never locked-in.”

**Guardian Industries Corp.**  
(Global Manufacturing Company)

“We migrated servers to the cloud in about ten minutes. This was very quick and proves this is a fast approach, and I am absolutely convinced this is the correct approach for us moving forward”

**Government Agency**

“Velostrata takes something that is really complex and makes it incredibly simple. Movement of VMs between our datacenter and the cloud was simple and fast, and the user interface and the configuration process were equally simple and intuitive.”

**Just Energy**  
(US Energy Company)

“We chose Velostrata because of its speed and simplicity, and because their solution will significantly reduce the labor required to support our migration efforts, especially when compared to other tools on the market. For us, Velostrata was basically magic.”

**Fortune 100 Healthcare Company**

## Core Technology

Velostrata decouples compute from storage in virtualized workloads, and introduces a number of patent-pending capabilities that make cloud workload mobility possible.

**Boot Over WAN:** Performs a native boot from the on-premises operating system over the WAN, in just a few minutes—regardless of the image size. While the image boots, Velostrata adapts it on the fly to meet the target environment.

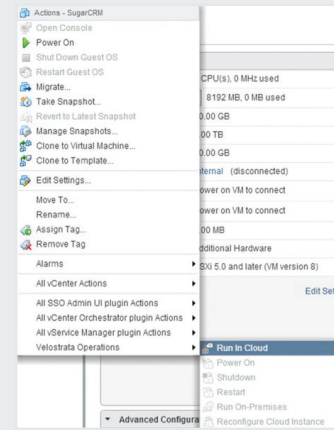
**Intelligent Streaming:** Prioritizes the elements necessary for a workload to run and moves them to the cloud first, so applications can begin running in minutes. Less frequently accessed data can be streamed in the background while VMs continue to run.

**Multi-Tier Caching and Optimization:** Includes a multi-tier, read-write cache in the cloud, which contains the working set of data needed by the application. Local write acknowledgment, cross-VM de-duplication, cache pre-fetching, network optimizations and asynchronous write-back ensure optimal performance even when storage is on premises.

**Resiliency:** Each Velostrata Edge™ deployment incorporates active-active appliances deployed across two update and fault domains. Writes are acknowledged in both Edge nodes and then optionally asynchronously transferred back to any on premises storage.

**Transparent Management:** No changes to the applications, images, networks, storage, or drivers are required and there is no need to learn new tools or processes as Velostrata integrates seamlessly into VMware vCenter. Velostrata is also designed with a PowerShell module, REST API for simple integration into 3rd party management tools.

**Security:** Data between Velostrata virtual appliances use SSL and is encrypted using AES-128. Cache and Data at rest in the cloud is de-duplicated, compressed, and encrypted with AES-256.



When you're ready to move workloads, simply click "Run in Cloud" from vCenter.

Velostrata's simple user interface, integrated directly with vCenter.

**Watch Velostrata Migrate a Large, Multi-Tier Application from VMware to Azure**

[velostrata.com/AzureMigrationVideo](http://velostrata.com/AzureMigrationVideo)

## Migration Workflow

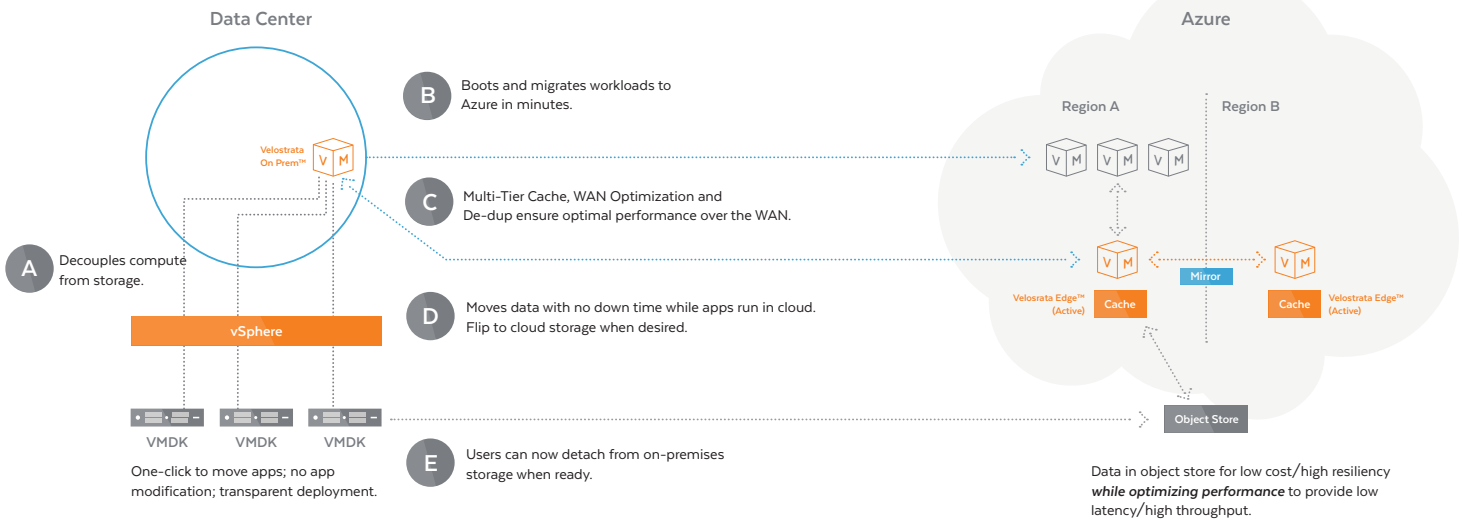


Figure: How Velostrata migrates workloads into Azure

# VELOSTRATA

Velostrata software enables public cloud migration and workload mobility with speed, scale and simplicity. Unlike replication-based approaches, Velostrata's agentless platform moves applications to the cloud in minutes. The software is easy to deploy and manage, and can significantly reduce the risks associated with migration. Unique capabilities let organizations "test before they migrate" in minutes, without taking production applications offline, and provide ongoing flexibility to move workloads back on-premises or to another cloud if desired.

Velostrata is backed by Intel Norwest Venture Partners and 83 North, and is headquartered in San Mateo, California, with research and development in Israel.



### For more information

Contact us at [info@velostrata.com](mailto:info@velostrata.com) to request a customized demonstration.



**Website**  
[velostrata.com](http://velostrata.com)



**Velostrata Inc.**  
20 N San Mateo Drive, Suite 4  
San Mateo, CA 94401



**Phone**  
+1.408.444.6039